

Sigma Delta Epsilon/Graduate Women in Science

Xi Chapter Newsletter

Wednesday, February 18th, 2008

Dr. Ruth Lynfield

“MRSA in Minnesota”

Registration/Social 5:30-6:00
Tours & Appetizers 6:00-7:00
Presentation 7:00-8:00

India Palace
2570 Cleveland Ave N., Roseville, MN
Phone 651-631-1222

Dr. Ruth Lynfield is State Epidemiologist and Medical Director, Infectious Disease Division, Minnesota Department of Health. Her responsibilities include directing the surveillance, control and prevention of infectious diseases; leading the medical response of the department during public health emergencies; and monitoring state, national and international infectious disease activities to identify emerging issues that may affect the health of Minnesotans.

Dr. Lynfield has a special interest in **Methicillin-resistant Staphylococcus aureus (MRSA)**, a human pathogen that is difficult to treat because of its resistance to a major group of antibiotics, the beta-lactams. It is often referred to by the popular media as a “superbug” and causes diseases ranging from relatively mild skin infections to severe, life-threatening toxic shock and death. The first documented outbreak occurred in a Boston hospital in 1968 and for the next 2 decades, MRSA infections were almost exclusively healthcare associated (HA-MRSA). In recent years, that has changed. MRSA infections are now seen in otherwise healthy people with increasing frequency (community associated, CA-MRSA).



Students \$15 Members \$20 Guest \$22

Contact Michele Anderson at ande8303@umn.edu or 612-618-2548 for information.

PLEASE POST

Name: _____

Affiliation _____

Guest Name: _____

Guest Affiliation: _____

I am a (circle one): member _____ guest _____ student _____

Total amount enclosed: \$_____

To register, mail check (payable to SDE) and form to: Michelle Anderson, 4131 39th Ave. S., Minneapolis, MN 55406

Registration must be received by U.S. mail by Monday, February 16th.

Save the Date for Future Xi Meetings

March 16: Kathy Zahs, Assoc. Prof. of Neurology, UMN will speak about Alzheimer's Disease
April, date TBD, Tracy Twine will speak about sustainability of biofuels.

President's Message

Hello everyone! I hope you are all still enjoying our winter weather. Looking out over the snow-drifts, it is hard to believe that within a few weeks they will give way to new grass. But time has a way of marching on, and so must we. This month, we are **spotlighting** a number of opportunities for our members to **volunteer** their time and talent. Each of these is discussed inside in greater detail.

The **Twin Cities Regional Science Fair** is in need of **Judges**. The time commitment is only one afternoon, and they provide dinner! What a great way to model to young students that scientists come in all shapes, colors and genders.

We are also in need of a few members to staff our **GWIS table** at the **International Women's Day celebration**. This event brings together a wide range of local women's organizations, from the League of Women Voters to the American Refugee Committee to the Minnesota Women's Press. This is always a wonderful, high-energy event.

Finally, **GWIS** itself is in need of **volunteers** at both the **local and national level**. Our Xi Chapter is looking for interested and energetic members to serve on the chapter board next year, and the National Organization has openings for new officers and committee members. If any of these positions sound interesting to you, please let me know!

I hope to see you all at the **meeting** on **February 18th!** – Michelle Carter, carte008@umn.edu

SDE/GWIS National Fellowship Reviewers Needed!

Sue Keirstead is looking for **Xi members and friends** to help us review a **fraction** of the almost **200 applications** that have been received for GWIS/SDE National Fellowships for graduate students, post-doctoral fellows, and early stage faculty conducting academic research in the natural sciences, including: physical, environmental, mathematical, computer, life sciences, anthropology, psychology and statistics. Applications consist of a **4-page proposal** plus supporting documentation and reviewers are provided a **rubric** to use for judging the merits of the application. This is the **fun part** of being involved in this organization—helping with the disbursement of money to deserving women scientists! If you can review **one or more applications between now and the end of April**, please contact Sue Keirstead at sakeir@umn.edu.

Science Fair Judging Opportunities!!

The **Twin Cities Regional Science Fair** for grades 6-12 will be held on **Feb. 27-28, 2009** at the University of Minnesota Field House. Opportunities to serve as a judge for middle school or high school levels or both, and/or a paper-reading judge. For registration or information: <http://www.tcrsf.org/forjudges.htm>. The **State Science Fair** will be held at the Crowne Plaza in St. Paul on **March 29-31**. Opportunities to judge are available as well. <http://www.fair.mnmas.org/>

GWIS Past-President Named AAAS Fellow

GWIS Past-President and Omicron member Paddy Wiesenfeld has been chosen as a AAAS Fellow this year! This is an incredible honor and we send our congratulations to you, Paddy! Paddy is currently in her second year as the **National GWIS Past President and was National President in 2006-2007**. She has been instrumental in establishing the Sister-up mentoring program at the local level (Omicron) and at the National level. As President, she developed the first **Strategic Plan (2007-20012)** for the organization which is now our touchstone for future efforts. Paddy also began our monthly e-news in 2006 to increase our communications with the members. Paddy has shown her leadership skills many times over as GWIS and Omicron officer and for that we are greatly appreciative. She is now the Acting Branch Chief, Neurotoxicology and In Vitro Toxicology Branch (NIVTB), Division of Toxicology, OARSA, CFSAN, U.S. FDA. – **Dee McManus**

Inside this issue:

February Meeting	1
Save the Date	2
President's Message	2
National Fellowship Reviewers	2
Science Fair	2
AAAS Fellow	2
Spotlight on a Newsletter Editor	3
International Women's Day	3
GWIS Available Positions	4
Xi Chapter WEB News	5
Mary Haga Travel Awards	5
Joint Dinner of Professional Women's Associations	5
Map to This Month's Meeting	6



Spotlight on Our Newsletter Editor Assistant

Each month I, **Ginger Bladsacker**, work with Sue Keirstead to produce the GWIS monthly newsletter. When I'm not running after 2 kids that are 10 years apart in age and organizing the newsletter, I work a full-time position for a very large non-profit medical organization named **Mayo Clinic**. My position is a Special Projects Coordinator located in Rochester in the Pharmacy area of the Medical Products/Health Solutions Division. Mayo Clinic has several medical offices, hospitals and research facilities throughout the Midwest, Arizona and Florida. The Mayo name is known world wide and our facilities treat patients locally, nationally and internationally. The research facilities provide data on several projects, such as, gene therapy and vaccines. Mayo, also, publishes magazines, books and abstracts for its doctors and associates.

In my position, I maintain our area's websites and files pertaining to policies and licenses. In May of 2005, I was a student at the University of MN-Rochester through a distance learning program. My professor's assistant, Ben, emailed the class about a position with GWIS as a newsletter editor (I still have the email). I immediately responded and the rest is history. I graduated May of 2007 with a Bachelors degree in **Scientific and Technical Communication**. My hope for the future is to continue organizing the GWIS monthly newsletter and move up the ranks within Mayo Clinic.



International Women's Day Celebration

Xi Chapter is once again a co-sponsor of the **14th Annual International Women's Day Celebration**, to be held Saturday, March 14 from 8 am to 3:30 pm. Keynote presenters will be **Fionnuala Ní Aoláin**, who will speak about international policies involving women in conflict and post-conflict situations, drawing from her experience in Bosnia and the European Court of Human Rights; and **Fahima Vorgetts**, a former chemist who is now an advocate for women and girls in her home country of Afghanistan. The day will also feature screenings of new documentary films; workshops on a range of topics; and artisan craft items for sale. GWIS and other sponsoring organizations will have informational displays to facilitate networking. More information can be found at <http://www.theadvocatesforhumanrights.org/>. A detailed schedule of events will be available closer to the event date.



Volunteers are needed to staff our table, and to help spread the word about GWIS! Shifts will be 8 am to 10:30 am; 10:30 am to 1 pm, and 1 pm to 3:30 pm. Please contact Michelle at carte008@umn.edu if you are able to help out. Thanks!

SDE/GWIS Xi Board Members

President = Michelle Carter
President.xi@gwis.org 612-860-2855

VP, Membership = Kathleen Carlson
vp_membership.xi@gwis.org 612-799-0707

Co-VP Programs = Jane Sharer Maier
Programs.xi@gwis.org 612-382-9376

Co-VP Programs = Michele Anderson
Programs.xi@gwis.org 612-618-2548

Treasurer = Kathleen Bennett
Treasurer.xi@gwis.org 612-379-0453

Secretary = Carrie MacNabb
Secretary.xi@gwis.org 612-722-3433

Newsletter Editor = Sue Keirstead
Newsletter.xi@gwis.org 612-626-2290

Web Site and Job Bank = Laura Mauro
Jobs_web.xi@gwis.org 612-624-6274

National Liaison = Laura Mauro
mauro002@umn.edu 612-624-6274

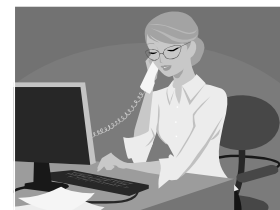
Speaker's Bureau = Kendra Kauppi
Speakers_bureau.xi@gwis.org 612-625-8280

Science Outreach = Julia Hatler
Science_outreach.xi@gwis.org

Science Outreach = Laura Ramsey
Science_outreach.xi@gwis.org

Awards = RuthAnn Duda
Awards.xi@gwis.org 612-331-2107

Parliamentarian = Maggie Mahan
mahanmagg@gmail.com



National GWIS Positions Available for 2009-2010

Our National Organization is in need of dedicated and energetic officers! These positions are open for 2009-2010. Please contact Michelle at carte008@umn.edu if you are interested in one of these positions, or if you would like to nominate someone else. Thanks!



Vice President -This position requires learning the rules and operation of GWIS (bylaws, policies and procedures, and GWIS organizational chart). The Vice-President is a member of the finance committee and the Editorial Board and oversees other committees. In addition, she maintains communication with the President and President-Elect to familiarize herself with duties of those offices. The Vice-President serves one year and then is elected President Elect and the following year moves into the position of President.

The Membership Secretary shall have charge of the registry of members of the Organization. She shall publish a new membership directory every two years, contingent on available funds. The position will receive compensation. The Membership Secretary is tasked with tracking members and updating their contact/directory information, as well as encouraging transitioning members to continue their membership; for example, student members who move into new positions. She shall be empowered to hire office help as appropriate, within budgetary limits, to fulfill her duties. (The "office help" usually refers to the final publishing of the registry of members, engaging a service such as Kinkos.)

The Treasurer

- (1) is the custodian of the general (operating) fund, the Sigma Delta Epsilon, the Eloise Gerry and the Vessa Notchev Fellowships funds, and any other special funds which may be developed;
- (2) may be bonded, the cost of the bond to be paid from the general fund;
- (3) serves as advisor to the Finance Committee;
- (4) shall, within thirty (30) days after the close of the fiscal year, submit the accounts of the general fund, the Fellowships funds and any other special funds for audit. The audit shall, at the close of the Treasurer's two-year term, be conducted by a certified public accountant. In alternate years, the audit may be conducted by an enrolled agent. The cost of the audits shall be paid by the respective funds.
- (5) files with the appropriate authorities statements and reports required by State and Federal laws; and
- (6) shall, as retiring Treasurer, be empowered to write checks in payment of bills received during the thirty (30) day period before the accounts are submitted for audit.

The Omega Committee is intended to represent members who are not in local chapters. Past activities have included circulation of a newsletter, sponsoring of science fairs, and international activities.

Procedures:

- a. The Omega Committee is elected by the Membership for three year terms, with the longest serving member as Chairperson.
- b. The Omega Committee is composed of members from the Omega Chapter.
- c. The Omega Committee communicates with Omega members to determine their needs, interests, and concerns; represents these members to National GWIS; and keeps these members informed of the activities of National GWIS, especially as relates to their interests.
- d. The Omega Committee plans and executes activities for the combined best interests of Omega members and National GWIS.



The Nominating Committee is responsible for finding nominees for elected positions each year, for putting together the ballot, and making sure proper "paperwork" (much is e-mail now) such as nomination forms, etc., is taken care of. In addition, current members of the Nominating Committee may not run for another elected office due to conflict of interest. The chair of the committee stays in close communication with other GWIS officers – especially the V.P. This is a three-year position, with the longest-serving member as Chairperson.

XI Chapter Web-News

We hope that you have had a chance to check out our new chapter website at www.xi.gwis.org. You will see that we now have:

A NEW LOOK: A streamlined, more professional look and organization that will help highlight important new announcements and information for all our members.

ON-LINE MEMBERSHIP RENEWAL for National and Xi Chapter dues: Click on the 'Membership' tab and scroll down to the Chapter list. Next to 'Twin Cities, MN' you will see a link that reads 'Pay your dues using credit'. You will go through a series of questions (required and optional) to update our files as well as allow you to pay your dues.

NEW CONTACT INFORMATION for the Board: Click on the 'Officers' tab to see list of board members and their contact information.

This is a work in progress so excuse us as we continue to upgrade to bring our chapter site to 'fully functional' status.

I would like to take this opportunity to thank **Dee McManus**, the National Executive Director, who has been working hard with web-design companies to revitalize the National GWIS website (www.gwis.org) as well as our own Xi Chapter site. Her zeal to push for these changes and her enormous efforts to get it accomplished are appreciated! *Until next time....!* Laura Mauro, Website coordinator

Mary Haga Travel Awards: Deadline Feb. 13 2009

Xi Chapter of Sigma Delta Epsilon has established travel awards in memory of Mary Haga. These awards are given to defray some of the costs that female graduate students incur while traveling to national or other major scientific meetings where they are presenting the results of their research.

Any female graduate student in Minnesota engaged in scientific research is eligible to apply but, other factors being equal, preference will be given to active members of Xi Chapter. The applicant should have limited other support for attending scientific meetings. The funds may be used for travel expenses and registration fees, not for room and board. The usual award is in the range of \$200 to \$300. A notice of abstract acceptance must be provided before disbursement of the award. Your meeting must take place after the award deadline, not before.

For more information about these awards and for an application form and instructions, visit the Xi website: www.xi.gwis.org or contact RuthAnn Riel Duda at rrduda@mmm.com.



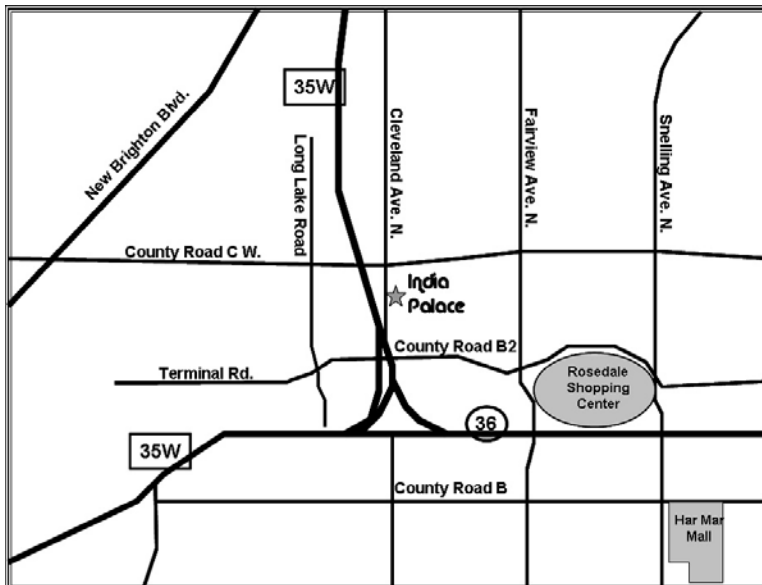
2009 Joint Dinner of Women's Professional Associations Thursday, March 12, 2009

Xi Chapter of GWIX/SDE has agreed to be a **partner** in the 2009 Joint Dinner of Women's Professional Associations, to be held on Thursday, March 12 at the **Metropolitan Ballroom in Golden Valley**. Proceeds from the 20th annual event, which is considered **Minnesota's Premier Networking Event**, will benefit the **Women's Foundation of Minnesota**. The evening will feature **Keynote Speaker, Lois Quam**, Head of Strategic Investments, Green Economy and Health, at Piper Jaffray, a newly created senior post responsible for the development of new business opportunities in the emerging green economy and health care sectors. The event begins at **4 pm** with a **fund raiser** where attendees will have the opportunity to purchase unique experiences such as **hiking with Ann Bancroft** and **dinner with Lynne Rosetto Casper**. These will be available on a first come, first served basis. **Registration and networking** will begin at **5 pm**, and seating for **dinner and the program** will begin at **6:00 pm**. Admission is **\$60** for members of partner organizations (that's us!). As partners, we have pledged to **encourage members to attend and volunteer** at this gathering of 400-600 professional women. In return, our logo and information about GWIS will be part of a slide show that will be looping during the networking session and we will have an opportunity to stand at the end of the event to announce the name of our organization. Please contact Sue Keirstead if you are interested in helping with the organization of this event or would like to sit with other Xi members. To register on-line, go to www.wfmn.org or call 612 337 0505.

The Women's Foundation of Minnesota is a non-profit organization that is dedicated to making a positive difference in the lives of Minnesota women and girls (www.wfmn.org).

SDE/GWIS Newsletter
XI Chapter
1455 Hamline Ave. N.
St. Paul, MN 55108

Sigma Delta Epsilon/Graduate Women in Science



India Palace
2570 Cleveland Ave. N.
Roseville, MN
651-631-1222